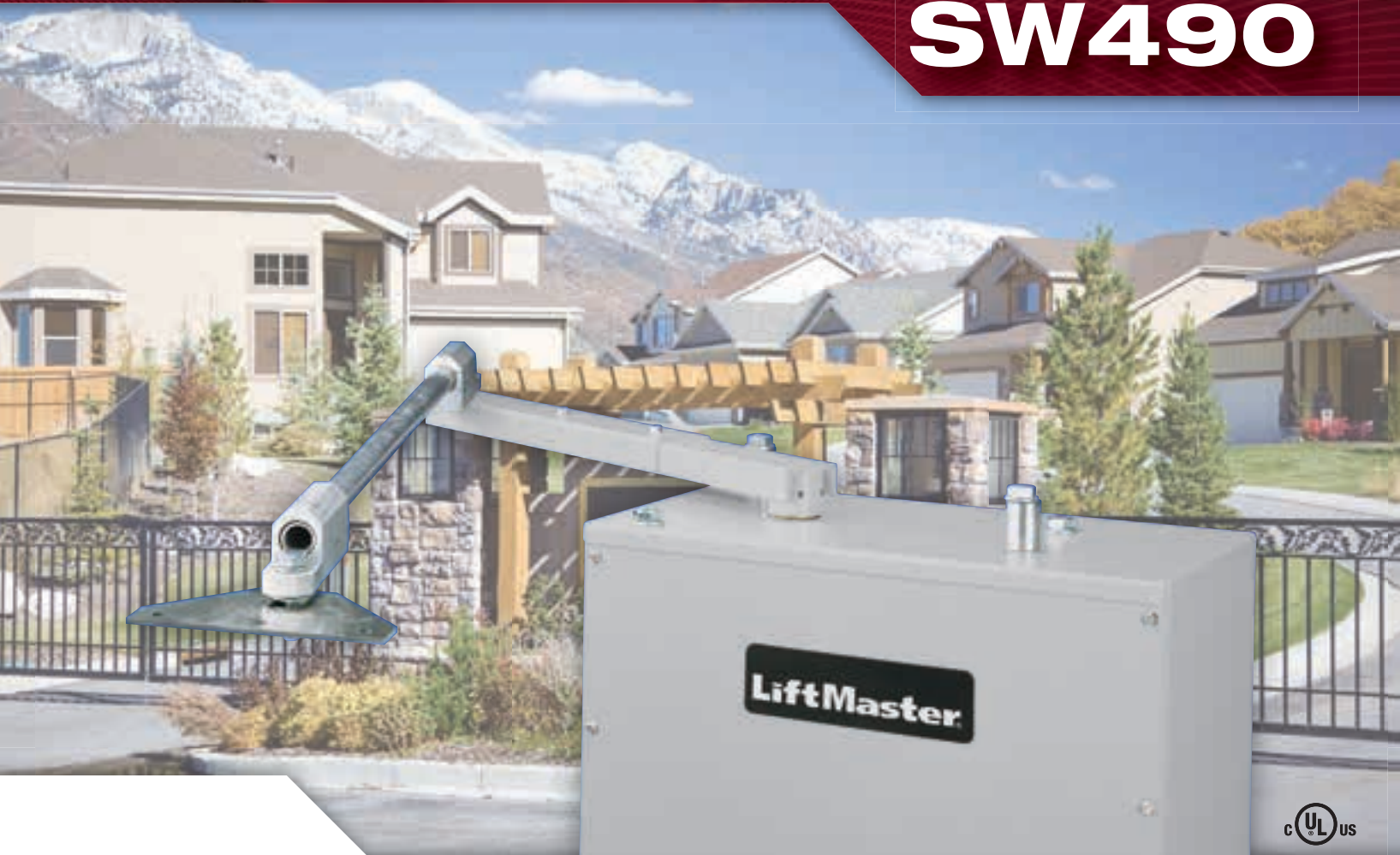


INDUSTRIAL SWING GATE OPERATOR

SW490



**HEAVY-DUTY INDUSTRIAL
COMMERCIAL SWING
GATE OPERATOR**

Powerful performance for high cycle, heavy industrial swing gate applications.

This hefty design supports gate lengths up to 22 ft. and gate weights up to 1,000 lbs. Utilizing a weather-resistant powdercoated steel enclosure, a wormgear reduction drive and high-starting torque motor offers you years of reliable and powerful performance. This model is ideal for demanding industrial applications and is fully UL325-compliant.

Built-In Receiver



Exclusive from LiftMaster®, a single remote control solution for gate access and additional access points.

LiftMaster®

SW490

STANDARD FEATURES

Inherent Obstruction Sensing

This unit's internal obstruction sensing system offers a single force adjustment for both the open and closed directions. If the gate strikes an obstruction, a closing gate will reverse to open and an opening gate will reverse to close.

External Obstruction Sensing

Input connections are provided for external contact and non-contact sensors, such as photo-eyes and edge devices.

Advanced Dual Gate Operation

This convenient 2-wire system allows the operation of 2 separate gate operators in unison at a single entrance. This advanced system provides the added convenience of connecting accessories to either operator.

Sequenced Access Management

The sequenced access management (SAM) system provides the capability to sequentially control the operator in tandem with a barrier gate.

Digital Logic Control

Supports long-distance control wiring runs of over 1,000 ft., providing you greater flexibility of gate operator site placement.

LED Indicators

Operator input, status and diagnostic LEDs simplify setup and troubleshooting.

Control Inputs

Control inputs allow the connection of a full range of optional external devices like loop detectors, telephone entry systems, access control systems and radio receivers.

Warning Device

UL325-compliant entrapment warning alarm has the ability to be set for pre-operation warning. This will provide a 3-second warning prior to and during gate movement.

To comply with UL325, installation of secondary entrapment protection devices is required with this operator. Ask your installer which safety device is correct for your application.

Loop Detector Inputs

A full range of inputs are available to support exit, shadow and interrupt loop detectors.

Timer To Close

Adjustable timer can be set from 1 to 180 seconds. The unit will automatically reset upon receiving any additional open commands.

Maximum Run Timer

Protects against damage to the gate and operator by limiting the unit's run time to 120 seconds.

Maglock Control

A dedicated control relay is provided to activate and deactivate an optional magnetic lock for securing the gate.

Gear Drive Reduction

The wormgear 30-to-1 reduction unit is saturated in an oil bath for strong fluid motion of the operator.

Limit Settings

All driven limit cams are fully adjustable, adding considerable convenience to unit installation and maintenance.

Surge & Spike Protection

Specially designed circuitry provides excellent protection from external spikes or surges.

Manual Disconnect

Ensures that manual operation is possible during emergencies and maintenance work.

Removable Access Control Panel

A removable access door is incorporated into the design to provide easy access to the electronics when programming and for maintenance.

SPECIFICATIONS

Operator Speed

90° swing in 12 seconds

Power

115/ 208/ 230 VAC,
Single Phase - 60Hz

208/230/460/575 VAC,
Three Phase - 60Hz

Accessory Power

One - 24VAC

Operator Weight

200 lbs.

UL Listed

UL991

UL325 - Class I, II, III and IV

Construction

Gear Reduction:

30:1 Wormgear in Oil

Motor:

1 HP High-Starting Torque

Metal Frame:

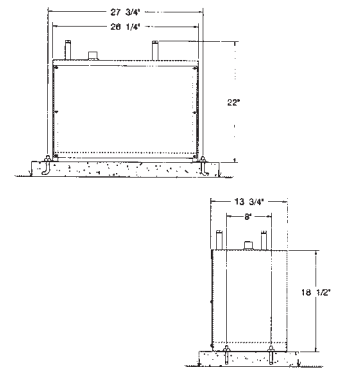
Pre-Galvanized Steel

Enclosure:

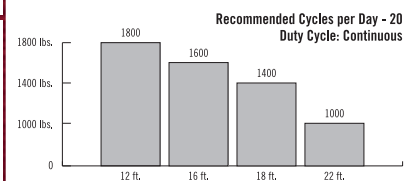
Weather-Resistant 14-Gauge

Pre-Galvanized Steel

Dimensions



Recommended Capacities



2 YEAR WARRANTY

OPTIONAL EQUIPMENT

Auxiliary Limit Switches

Auxiliary Contact Blocks

Self-Regulating Heaters

Quick-Release Manual

Disconnect System

Remote Antenna Mounting Kit

LiftMaster®

THE CHAMBERLAIN GROUP, INC.
845 Larch Avenue • Elmhurst, IL 60126

www.liftmaster.com

